

Onondaga County Sheriff's Office News

Eugene J. Conway

Sheriff



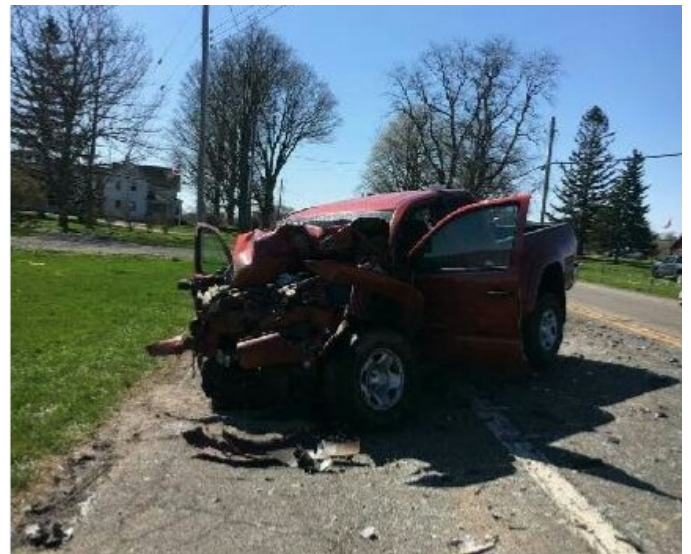
For Release: Immediate 04-23-16

Contact: Detective Jon Seeber (315) 435-3033 DR# 16-254443

Skaneateles Man in Serious Condition after Route 20 Crash Involving Farm Tractor

Town of Marcellus, New York – The Onondaga County Sheriff's Office is investigating a serious crash on Route 20 in the Town of Marcellus, after a pickup truck rear-ends a farm tractor.

This afternoon at approximately 2:34 pm, sheriff's deputies along with rescue crews from the Marcellus Fire Department and Ambulance, responded to Route 20 between Slate Hill Road and South East Townline Road for a reported crash involving a Toyota Tacoma and a John Deer Commercial Farm Tractor. Deputies investigating the crash say that the driver of the Toyota pickup, a 29 year old man from Skaneateles, was traveling eastbound when his vehicle rear-ended the tractor, which was operated by a 63 year old man from Mount Morris NY.



The impact from the collision caused significant damage to the front of the Toyota and forced the tractor several feet off the road. The driver of the pickup, who is listed in serious but stable condition, suffered internal injuries and was unconscious when first responders arrived. The driver of the tractor complained of neck pain. Both men were transported to Upstate University Hospital.

Route 20 between Slate Hill Road and South East Townline Road was closed for several hours while members of the Onondaga County Sheriff's Office Accident Investigation Team processed the scene. No tickets have been issued and the crash remains under investigation.

#####